



THE UNIVERSITY
OF AUCKLAND

NATIONAL INSTITUTE OF
CREATIVE ARTS AND INDUSTRIES®

2012

The University of Auckland

National Institute of Creative Arts and Industries

Postgraduate Prospectus

Architecture | Dance Studies | Fine Arts | Music | Planning | Urban Design



Dean's welcome

Welcome to the National Institute of Creative Arts and Industries (NICAI). I am confident you will find life as a NICAI postgraduate stimulating and rewarding.

Our faculty is recognised as an innovative centre of creative research and practice. Comprising the School of Architecture and Planning, Elam School of Fine Arts, the School of Music, and the Dance Studies Programme, NICAI is immensely proud of its many nationally and internationally respected scholars, teachers and practitioners.

Excellence is at the heart of NICAI. Our diverse range of professional, taught and research-based postgraduate programmes all reflect the faculty's goals to foster, nurture and achieve academic and creative excellence across its disciplines.

Supported by some of the country's best resources – including specialist libraries, dedicated study spaces, well-equipped studios, workshops and practice rooms – NICAI

postgraduates have world-class opportunities to develop and hone their creative practice and scholarship. They also have myriad occasions to showcase their work through a wide range of exhibitions, performances, seminars and conferences in New Zealand and abroad.

This postgraduate prospectus offers an overview of the study and research pathways available at NICAI. It is also a guide to more detailed information, including our comprehensive website, and provides contact details for faculty members who can offer additional academic advice.

Thank you for your interest in our faculty. I look forward to welcoming you as a NICAI postgraduate student in 2012.

PROFESSOR JENNY DIXON
Dean, National Institute of Creative Arts and Industries
www.creative.auckland.ac.nz



Why study at NICAI?

The National Institute of Creative Arts and Industries (NICAI) is a faculty of The University of Auckland, New Zealand's leading internationally recognised university*.

Postgraduate study at NICAI opens up a wealth of academic and professional career opportunities in the creative arts and industries. You will work with academic staff and fellow students who are experts and entrepreneurs, artists and professional practitioners, scholars and researchers, in a dynamic, creative environment.

Our postgraduate degree programmes and research areas in architecture, planning, urban design, dance studies, fine arts, music and sound combine in-depth study of your chosen discipline with opportunities for interdisciplinary and collaborative practice across the faculty.

Creative collaboration

All our postgraduate degree programmes allow you to specialise in particular topics and/or media that interest you. But what is even more attractive to many of our postgraduate students is NICAI's unique studio-based approach and the opportunity to work closely with other students within and across the range of creative disciplines we offer.

Innovation and research

The University of Auckland is home to the largest and most active community of researchers in New Zealand.

At NICAI, you will be involved in innovative research in both practical and theoretical contexts, within an environment recognised both nationally and internationally for its high creative and intellectual standards.

Global perspective

The University of Auckland is the only university in New Zealand with membership of Universitas 21, an exclusive group of major research-intensive universities, and the Association of Pacific Rim Universities, an association of some of the world's premier universities.

NICAI is a member of the European League of Institutes of the Arts (ELIA), an independent global network of approximately 315 arts education institutes, as well as national and international professional bodies associated with our disciplines.

NICAI's strong links with national and international scholars and practitioners enable you to foster relationships with relevant

academic, professional and business organisations as part of your postgraduate study.

During your postgraduate study at NICAI, you may also have the opportunity to develop your own global connections through study or research overseas, via the 360° Auckland Abroad international exchange programme.

Contemporary practice

Studying at NICAI promotes imaginative thinking, fresh ideas and innovation. It offers more than 20 specialist research, taught and professional programmes across our range of disciplines.

A postgraduate experience at NICAI and The University of Auckland will set you up for a life of research, discovery and practice that will contribute to the future development of the creative arts and industries sector, in New Zealand and overseas.

*See www.auckland.ac.nz/leadinguniversity

Postgraduate study and research

NICAI offers a range of postgraduate programmes and research opportunities across all our schools. The programmes have been carefully designed to respond to the needs of those aspiring to both academic and professional careers. In most cases, part-time study options are available to enable students to fit study around employment or other commitments.

Study programmes

Bachelors (Honours) degrees

These are programmes that follow a bachelors degree, designed to attract the best undergraduate students commencing graduate-level studies. The programmes enable students to extend their knowledge and skills through further coursework and a dissertation.

Postgraduate diplomas

These are graduate-level qualifications that build on the knowledge gained in your major subject at undergraduate level. They are normally completed by coursework only, but may sometimes include a project that provides opportunities to venture into research.

Masters degrees

These are degrees that offer advanced specialist study and/or research in a particular field. Most students need to complete an honours degree or a postgraduate diploma to be eligible for masters study, although in some cases may be able to enrol directly into a masters programme from a bachelors degree. Masters are usually offered as research or taught options:

- A research masters provides the opportunity to develop advanced research skills and to present findings in documented scholarly form (such as a thesis).
- A taught masters will provide you with advanced specialist training in your chosen field, and is completed by undertaking taught courses, often in combination with a dissertation or research project.

The School of Architecture and Planning also offers two accredited masters programmes.

Doctorates

These are internationally recognised degrees of distinction for students who intend to pursue an academic or research career. NICAI offers Doctor of Philosophy (PhD) degrees across each of our disciplines as well as named doctorates in Fine Arts and Music.

The PhD thesis is a formal and sustained exposition of a piece of advanced research

work generally carried out over a period of three to four years of fulltime study. As a PhD student, you will have the opportunity to make an original contribution to knowledge in a specific field and are required to meet internationally recognised standards for such work.

In addition, the recently approved introduction of creative practice within the PhD gives students the opportunity to incorporate creative work such as fine art, design, performance or film into their research. A creative practice PhD differs from a standard PhD in that it allows new cultural and artistic knowledge to be embodied or expressed through media other than text, along with a rigorous scholarly analysis of the significance of this knowledge in a 60,000 word thesis.

Research at NICAI

The University of Auckland has the largest number of top-rated researchers of any New Zealand university and the largest annual number of graduate student completions. Our research capability is acknowledged by being awarded the highest level of research income of any university in New Zealand – 30% of the nation's research fund despite having only 18% of the PBRF-eligible staff in the university system.*

Situated in a cosmopolitan, multicultural, Pacific Rim city, the University is ideally positioned for innovative research, and this is particularly evident in the creative arts and industries. NICAI is committed to supporting research that extends the boundaries of knowledge and opens up new areas of creative practice. We provide a national hub for collaboration and interaction between researchers in a wide range of creative disciplines, across tertiary, industrial and government sectors.

Research training at NICAI is fully supported by the teaching and expertise of staff across the faculty who regularly receive national and international recognition for their pioneering research. Both staff and postgraduate students present their research in a wide range of international settings, from the art galleries of Auckland and professional conventions throughout Australasia to the Venice Biennale and the concert platforms of Europe.

Funding your study

Undertaking postgraduate study at The University of Auckland is a lifelong investment in your future. You will have to contribute towards the total cost of your study; however, there are many avenues open for financial assistance.

Tuition fees

If you are looking at postgraduate study you will need to think about costs such as tuition fees and associated university levies, textbooks, transport, accommodation and other living expenses. Information about fees for 2012 is available at:

www.auckland.ac.nz/fees

Financial assistance

NICAI Postgraduate Allowances are available to all NICAI postgraduate students. They may be used to cover equipment user charges, printing, binding, consumables and internet access costs that are not subsidised by the Library or faculty.

There are also a range of financial funds specifically available to doctoral students to help cover costs such as research-related travel, conference attendance, equipment and other costs that cannot be covered by research grants.

For more information on funding visit:

www.creative.auckland.ac.nz/pg-money matters

Scholarships

There are a number of scholarships available to assist you financially while you are studying. Some scholarships are open to students from any faculty and some relate directly to specific disciplines within NICAI. For more information about scholarships contact the University.

Phone: 0800 61 62 65 or +64 9 923 1969

Email: scholarships@auckland.ac.nz

www.auckland.ac.nz/scholarships

*Performance Based Research Fund Report 2006.

Architecture, Planning and Urban Design

Today's architects, planners and urban designers work in a dynamic, global environment where sustainability, climate change, evolving technology and the complexity of human society are increasingly important factors. Our postgraduate programmes open up exciting opportunities for research that will shape the future direction of these professions and enhance career prospects.

The School of Architecture and Planning is a highly regarded centre for advanced multidisciplinary study and research. Amongst our staff are many internationally recognised academics who engage in critical debate about architecture and planning and, through research, foster experimentation and new forms of practice. The School attracts high calibre local and international students, creating a richly diverse environment in terms of culture, experience and opportunities.

With the School's fortunate location in central Auckland, our students and staff gain constant inspiration from the city's vibrant Pacific Rim culture and identity. During your postgraduate studies you will have the opportunity to collaborate across disciplines, sharing ideas and formulating creative solutions to the professional and environmental challenges we face.

The School offers a full range of postgraduate research and taught programmes as well as two professional programmes, the Master of Architecture (Professional) (MArch (Prof)) and the Master of Planning Practice (MPlanPrac)*, accredited by the relevant professional bodies.

Highlights

- High quality, research-led teaching
- Excellent digital and traditional workshop facilities
- Diverse staff interests including sustainability, history/theory, design, digital media, equity and diversity, urban and regional policy and practice
- Two accredited degrees recognised by the relevant professional bodies

Specialist facilities and research resources

Postgraduate students in the School of Architecture and Planning can make the most of digitally-equipped design studios, technical workshops, audio-visual equipment, computer labs and dedicated study spaces.

The outstanding Architecture and Planning Library has over 45,000 books and more than 1,500 architecture, planning and urban design periodicals and journals, providing a rich resource for postgraduate research.

This includes the Architecture Archive, featuring a unique collection of original drawings, specifications and photographs by some of Auckland's most prominent architects since the early 20th century.

For information about research projects at the School of Architecture and Planning, visit our website:

www.creative.auckland.ac.nz/research

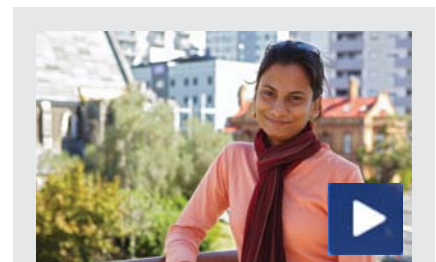
People

The School has the expertise and experience to supervise a wide range of research topics. Our staff are engaged in diverse research projects exploring issues of theory, design sustainability, policy and practice in urban and natural environments. We have close links with our professional communities and are involved in consultation with central and local government on policy issues. We engage actively in leading urban change.

www.creative.auckland.ac.nz/academic-staff

Architecture, Planning and Urban Design Programmes		
Programme	Duration	Postgraduate Adviser
Postgraduate Diploma in Architecture (PGDipArch)	1 year fulltime 2-4 years part-time	Dr Michael Linzey
Master of Architecture (Professional) (MArch (Prof))	2 years fulltime 4 years part-time	Dr Michael Linzey
Master of Architecture (MArch)	1 year fulltime 2 years part-time	Dr Michael Linzey
Master of Architecture (MArch) in Sustainable Design	1 year fulltime 2 years part-time	Dr Hugh Byrd
Master of Planning (MPlan)	1 year fulltime 2 years part-time	Dr Michael Gunder
Master of Planning Practice (MPlanPrac)*	2 years fulltime 4 years part-time	Dr Stephen Knight-Lenihan
Master of Urban Design (MUrbDes)	1 year fulltime 2-4 years part-time	Prof Errol Haarhoff
Doctor of Philosophy (PhD) - Architecture	3 years fulltime 6 years part-time	Dr Julia Gatley
Doctor of Philosophy (PhD) - Planning	3 years fulltime 6 years part-time	Dr Michael Gunder

*The Master of Planning Practice (MPlanPrac) will be replaced with the Master of Urban Planning (MUrbPlan) in 2012, subject to CUAP approval.



"After completing my undergraduate education in India I decided that I wanted to study abroad to see a different part of the world. I opted for The University of Auckland not only because it is New Zealand's top university but also because Auckland is internationally renowned as one of the world's most liveable cities!"

"A PhD is both challenging and stimulating but the support from my supervisors, colleagues and the Student Learning Centre has been remarkable. The past two and a half years have taught me perseverance, discipline and time management while sharpening my research skills."

Namita Kambli is a PhD candidate in Architecture and the recipient of a University of Auckland International Doctoral Scholarship.

Dance Studies

NICAI's Dance Studies Programme is New Zealand's leading centre for postgraduate research in dance. Attracting both local and overseas students, Dance Studies has become internationally recognised for its research in teaching and learning, choreographic practice and dance ethnography.

By exploring both new and traditional approaches in the areas of teaching and learning, choreographic practice and dance ethnography, we seek to:

- Build upon the body of expertise we already have in Dance Studies
- Promote interdisciplinary research across the faculty
- Develop dance sustainability in diverse cultural environments and from multiple cultural perspectives
- Advance dance knowledge, performance and relevance to society.

To realise these objectives, our postgraduate degrees in Dance Studies are designed to create opportunities for you to question, analyse, frame and develop your research within an active and supportive community. The study environment fosters enquiry and encourages improved understanding of dance through research, enhancing your own knowledge and preparing you for a rewarding career in dance performance or education.

As a postgraduate student you will have the opportunity to move between theory and practice, to fully explore a specific area of research and to experiment with new concepts, processes and methods.

The beauty of postgraduate study at NICAI is that you also have the opportunity to collaborate with others across the range of creative disciplines within the faculty, in both theoretical and practical aspects of performance and presentation.

Highlights

- Holistic approach balancing practical and theoretical elements
- Engagement with internationally acclaimed dance teachers, professionals and researchers
- Flexible learning options for work, life and study balance
- Vibrant multicultural and creative environment
- Dedicated postgraduate resources and facilities

Specialist facilities and research resources

In Dance Studies you have access to the purpose-built dance studios located on the Ground Floor of 26 Symonds Street. Further studios, teaching and practice spaces are located at the Kenneth Myers Centre (KMC) on Shortland Street. KMC is also used by students studying jazz, popular music and sound, and houses the Gus Fisher Gallery, creating exciting opportunities for interdisciplinary collaboration.

The Postgraduate Dance Studies Research Room provides a space for study and somewhere to catch up with fellow students and exchange ideas. The specialist Music and Dance Library, located in the School of Music, has a wide selection of books, periodicals, databases and audio-visual material relating to all aspects of dance.

For information about research projects within Dance Studies, visit our website:

www.creative.auckland.ac.nz/research

People

Dance Studies staff are experienced in supervising students through to completion of their postgraduate studies. They are passionate about their own and others' dance research, and committed to supporting your personal research ambitions. They are happy to assist you to make the demands of a postgraduate degree work for you, appreciating individual needs to balance study, work and family.

www.creative.auckland.ac.nz/academic-staff



"I chose to study Dance because it is a great passion of mine. I decided that I didn't want to work a normal nine to five job and wait for the evening to dance, I wanted to dance from nine to five."

"I chose to further my study in order to become an expert in my field. There is not a lot of literature available on hip hop dance, especially hip hop dance in New Zealand. I am now studying towards my masters in order to change this. Postgraduate study has allowed me to become a dance specialist, as well as concentrate on building my dance company 'Hopskotch' at the same time."

"The University of Auckland has given me many opportunities to explore dance in the community and also internationally, with a trip to Hong Kong and even a scholarship that allowed me to study hip hop dance in China."

Kat Walker is currently studying for a Master of Creative and Performing Arts (MCPA) – Dance Studies.

Dance Studies Programmes

Programme	Duration	Postgraduate Adviser
Bachelor of Dance Studies (Honours) (BDanceSt (Hons))*	1 year fulltime 1-2 years part-time	For all programmes: Associate Professor Alys Longley
Postgraduate Diploma in Creative and Performing Arts (PGDipCPA) – Dance Studies	1 year fulltime 2-4 years part-time	
Master of Creative and Performing Arts (MCPA) – Dance Studies	1 year fulltime 2 years part-time	
Doctor of Philosophy (PhD)	3 years fulltime 6 years part-time	

*The Bachelor of Dance Studies (Honours) (BDanceSt (Hons)) will be introduced in 2012, subject to CUAP approval.

Fine Arts

The essence of postgraduate study at Elam School of Fine Arts (Elam) is to expand your knowledge through studio practice and creative research. Undertaking a postgraduate programme at Elam puts you in a learning environment that broadens your understanding of contemporary art and helps you to reach your full potential as an artist.

Many Elam graduates have become successful practising artists and designers, who frequently feature in major national and international exhibitions and highly regarded publications.

Our postgraduate degree programmes will both extend and empower you according to your individual needs and ambitions. You are encouraged to explore the theoretical aspects of art and to realise your own creative research projects in specific areas of studio-based specialisation and/or interdisciplinary practice.

Elam's postgraduate studios operate from an interdisciplinary or cross-disciplinary perspective. Students from across an array of creative disciplines are based within the same studio areas and take part in shared group discussions. Painters, sculptors, interactive artists, video artists and practitioners in other media work alongside each other. It is our view that such cross-disciplinary interaction reflects the reality of much contemporary creative visual art and design practice.

Highlights

- Vibrant interdisciplinary studio-based learning environment
- Emphasis on original and creative thinking
- Nationally and internationally renowned practising artists and scholars on staff
- Access to the outstanding Fine Arts Library
- Well-designed studios and practical workshops

- Dedicated student exhibition space in two galleries: George Fraser Gallery and projectspaceB431

- Engagement with the Elam International Artist in Residence Programme

Specialist facilities and research resources

Elam provides an extensive array of studio, workshop and digital resources including:

- Digital media hub with photographic, video, film and audio facilities and equipment
- Screen printing, intaglio and lithography facilities
- Photography studios, darkrooms and printing facilities
- Wood, metal, foundry, casting and plastic fabrication workshops
- Large format digital printing facilities
- Ceramic kilns
- A spray booth

The Fine Arts Library, located in the main Elam building, is an important research resource with an impressive collection of books and databases. It houses New Zealand's largest collection of specialist monographs, as well as major contemporary and historic fine arts and design journals.

As an Elam postgraduate student, you may also have the opportunity to show your work to the public at one of Elam's dedicated galleries.

For information about research projects at Elam, visit our website:
www.creative.auckland.ac.nz/research

People

As a postgraduate student at Elam, you will work under the guidance of some of New Zealand's leading visual artists, designers and visual arts researchers who are regularly engaged in national and international projects. The supportive environment enables you to extend your research and practice in contemporary art and receive constructive and critical feedback.

www.creative.auckland.ac.nz/academic-staff



"The most enjoyable part of studying at Elam has been the opportunity to be taught by, and develop relationships with, some of New Zealand's most respected artists. The different approaches these teachers have taken to helping me understand contemporary art has enabled me to build a mountain of possibility when approaching my own practice as a painter."

"The knowledge that Elam has given me keeps me excited about my work and unafraid to keep stepping outside my comfort zone."

Toby Raine is currently studying for a Master of Fine Arts (MFA).

Fine Arts Programmes

Programme	Duration	Postgraduate Adviser
Bachelor of Fine Arts (Honours) (BFA (Hons))*	1 year fulltime	p mule
Postgraduate Diploma in Fine Arts (PGDipFA)	1 year fulltime 2-4 years part-time	p mule
Master of Fine Arts (MFA)	1 year fulltime 2 years part-time	Peter Robinson
Doctor of Fine Arts (DocFA)	3-4 years fulltime	Dr Simon Ingram
Doctor of Philosophy (PhD)	3-4 years fulltime	Dr Simon Ingram

*Available to qualifying students who have completed Parts I, II, III for the Bachelor of Fine Arts (BFA). It is not available to students who have already graduated with a BFA.

Music

The School of Music provides a dynamic environment for study and investigation of a wide range of musical subjects, including performance, composition, musicology, music education, popular music, ethnomusicology, jazz, and sound recording and design.

Our postgraduate degree programmes in music and music-related disciplines aim to encourage initiative, critical analysis and independent thought about music in social, cultural and academic contexts. As a postgraduate student you will become part of a research and learning hub that is recognised for its quality throughout Australasia and beyond.

Group and individual music-making opportunities are a vitally important part of life in the School. In addition to many student performances on and off campus, the School regularly holds concerts, master classes, seminars and workshops that will give you the chance to hear and participate in accomplished performances by fellow students, staff and visiting artists.

The School of Music offers nine postgraduate research and taught programmes as well as a Graduate Diploma in Music that supports continued music study for those looking to develop their musical skills and knowledge to a higher level.

Highlights

- High-calibre teaching from a committed team of professionally active staff
- Numerous learning and performance opportunities with many music ensembles

- Flexible pathways for specialisation in particular instruments, aspects or genres of music
- Opportunities to meet and learn from international musicians through our visiting-artists programme
- Exciting cross-disciplinary learning options

Specialist facilities and research resources

The School has a wide range of teaching and rehearsal spaces and a number of well-equipped composition and recording studios at its main Symonds Street building. Additional studios, practice spaces and recording facilities are located at the Kenneth Myers Centre (KMC) on Shortland Street. KMC is used for the teaching and learning of jazz, popular music, sound and dance and also houses the Gus Fisher Gallery, creating exciting opportunities for interdisciplinary collaboration.

The 155-seat Music Theatre, which has excellent acoustics and a sophisticated lighting system, can be used as a performance space for dramatic productions, music lectures, concerts and rehearsals. Several floors of the Fisher Building, on Waterloo Quadrant, house further teaching and office spaces. The Music and Dance library offers researchers an extensive collection of books, scores,

periodicals and recordings. Music resources covered include Western art music, ethnomusicology, jazz and popular music.

With a listening room as well as quiet study spaces, the library is a haven for research into all aspects of music.

For information about research projects in the School of Music, visit our website:

www.creative.auckland.ac.nz/research

People

School of Music staff members are internationally renowned composers, performers, scholars and educators who have made outstanding contributions to national and international musical endeavours. Throughout your postgraduate studies, you will benefit from their expertise, their research and their commitment to teaching.

A full list of current staff at the School of Music, along with their research interests, can be found on the NICA website:

www.creative.auckland.ac.nz/academic-staff



"After completing my undergraduate degree in Australia, I was keen to pursue my postgraduate study somewhere fresh and made the move to Auckland. I have completed my postgraduate diploma and masters degree in electroacoustic composition, and am now embarking on a PhD.

"Being at The University of Auckland has provided me with many opportunities for professional development as a researcher. I have presented at conferences in Paris and Shanghai and later this year I will be heading to New York and London. The University has continued to provide support and funding for these trips, without which they would not be feasible.

"During my time at this University I have garnered the skills and confidence necessary to becoming a successful artist and researcher. I have no doubt that I will pursue a career in academia and I look forward to going wherever in the world music may take me."

Alex Bennett is a PhD candidate in Music.

Music Programmes		
Programme	Duration	Postgraduate Adviser
Bachelor of Music (Honours) (BMus (Hons))	1 year fulltime 1-2 years part-time	For all programmes: Associate Professor Dean Sutcliffe
Postgraduate Diploma in Creative and Performing Arts (PGDipCPA) – Sound Recording and Design	1 year fulltime 2-4 years part-time	
Postgraduate Diploma in Music (PGDipMusic)	1 year fulltime 2-4 years part-time	
Master of Creative and Performing Arts (MCPA) – Sound Recording and Design	1 year fulltime 2 years part-time	
Master of Music (MMus)	1 year fulltime 2 years part-time	
Doctor of Music (DMus)	3 years fulltime 6 years part-time	
Doctor of Musical Arts (DMA)	3 years fulltime 6 years part-time	
Doctor of Philosophy (PhD)	3 years fulltime 6 years part-time	
Graduate Diploma in Music (GradDipMus)	1 year fulltime	

How to apply

Admission requirements

Before you make a formal application to The University of Auckland, we recommend you consult with the postgraduate adviser for the programme you are interested in. You can also visit the NICAI Student Centre or phone The University of Auckland Student Information Centre.

NICAI Student Centre

Email: info-creative@auckland.ac.nz

www.creative.auckland.ac.nz/studentcentre

The University of Auckland Student Information Centre

Phone: 0800 61 62 65 or +64 9 923 1535

You should also consult the 2012 University Calendar for specific admission requirements. A copy is available in the University Library or you can purchase one from the University Book Shop (UBS) or view online:

www.calendar.auckland.ac.nz

Applying for a postgraduate programme

If you are eligible to apply for a NICAI postgraduate programme, you must complete the University's online application process.

To apply, go to the University website and be guided through the process at

www.auckland.ac.nz/applynow

NICAI Supplementary Application

For many of NICAI's programmes a NICAI Supplementary Application is required. This includes a completed Supplementary Application Form and may also include a CV, portfolio, CD or DVD, a statement of intent and/or a research proposal etc. Copies of academic records are also required for study not completed at The University of Auckland. A Supplementary Application is required for the following programmes:

Architecture, Planning and Urban Design

- Master of Architecture (Professional)*
- Master of Urban Design

*Only for students new to The University of Auckland.

Disclaimer: Although every reasonable effort is made to ensure accuracy, the information in this document is provided as a general guide only for students and is subject to alteration. All students enrolling at The University of Auckland must consult its official document, the current Calendar of The University of Auckland, to ensure that they are aware of and comply with all regulations, requirements and policies.

Dance Studies

- Bachelor of Dance Studies (Honours)
- Postgraduate Diploma in Creative and Performing Arts – *Dance Studies*
- Master of Creative and Performing Arts – *Dance Studies*

Fine Arts

- Bachelor of Fine Arts (Honours)
- Postgraduate Diploma in Fine Arts
- Master of Fine Arts

Music

- Bachelor of Music (Honours)
- Postgraduate Diploma in Creative and Performing Arts – *Sound Recording and Design*
- Postgraduate Diploma in Music
- Master of Creative and Performing Arts – *Sound Recording and Design*
- Master of Music
- Doctor of Musical Arts
- Graduate Diploma in Music

Supplementary Application Forms can be requested from the NICAI Student Centre or downloaded from the NICAI website:

www.creative.auckland.ac.nz/pg-supp-app

Applications for NICAI postgraduate programmes for 2012 (excluding doctoral programmes) close on 8 December 2011.

All parts of the application must be submitted by this date.

Applying for a doctorate

To apply for a doctorate at NICAI, you will first need to complete and submit an Expression of Interest (EOI) online. Your EOI gives us the information we need to assess you as a potential doctoral candidate and to advise you appropriately.

Find out as much as you can about your chosen doctoral programme before you write and submit your EOI. You must also consult The University of Auckland Calendar to ensure that you are eligible for entry into the programme you are considering.

www.calendar.auckland.ac.nz

To complete your EOI, you will need the following information, including some documents in electronic format ready for uploading:

- Transcripts of your highest tertiary qualification
- Curriculum vitae or resume
- IELTS, TOEFL and TWE test scores from the last two years (international students)
- Statement of Research Intent – a 1000-word summary of your intended doctoral topic, with your reasons for choosing this topic and an explanation of what you hope to achieve during your studies at the University. The Statement of Research Intent form can be downloaded from our website:

www.creative.auckland.ac.nz/apply-doctorate

The online EOI can also be accessed from this web page. An academic staff member may contact you directly after your research topic is submitted to request additional information.

Doctoral applications may be submitted at any time of the year.

International student applications and admission

If you are an international student applying for postgraduate study you may also obtain further information and assistance from the University.

Phone: +64 9 923 1535

Email: int-questions@auckland.ac.nz

www.auckland.ac.nz/international

Enrolling in courses

Enrolment in courses is completed using a Postgraduate Course Selection and Approval Worksheet. Prior to completion you should consult with the relevant Postgraduate Adviser or your Head of School/Programme. For further information and assistance with admission and enrolment, contact the NICAI Student Centre.

Term dates for 2012

Semester One: 27 February – 25 June 2012

Semester Two: 16 July – 12 November 2012



**THE UNIVERSITY
OF AUCKLAND**

**NATIONAL INSTITUTE OF
CREATIVE ARTS AND INDUSTRIES®**

Contact

NICAI Student Centre

Level 2, Building 421

(Architecture and Planning Building)

26 Symonds Street, Auckland

Email: info-creative@auckland.ac.nz

www.creative.auckland.ac.nz

General Postgraduate Enquiries

**The University of Auckland
Student Information Centre**

Phone: 0800 61 62 65 or +64 9 923 1535

Email: postgradinfo@auckland.ac.nz